

Emerging Markets

User guide



Autobahn

Insight

Autobahn is Deutsche Bank's award-winning electronic distribution service.

Since 1996, Autobahn has been connecting clients to Deutsche Bank's innovative Capital Markets products and insights. Having started life primarily as an execution tool, Autobahn now provides electronic access to services harnessing our Sales, Trading and Research expertise and, ultimately creates an integrated experience with our voice services.

Autobahn is a simple, intuitive and consistent way for you to:

- Gain unparalleled access to Markets and Liquidity
- Electronically trade quickly and easily
- Intuitively access Deutsche Bank's powerful analytics and published content

Autobahn. Evolving Intelligent Trading.

<http://autobahn.db.com>

Insight is Deutsche Bank's Global Pre-Trade System. It provides a comprehensive suite of tools for analyzing markets across all asset classes around the globe.

The user-friendly interface makes it easy to access live market data, trade ideas, economics research, charting, trader commentary and analytical tools. Tailor the interface yourself to aggregate information for any market in a customized global view. Build Market Monitors to view market data, organize closely watched relationships into chart packages, or set targets for hundreds of prospective trades in the Trade Monitor.

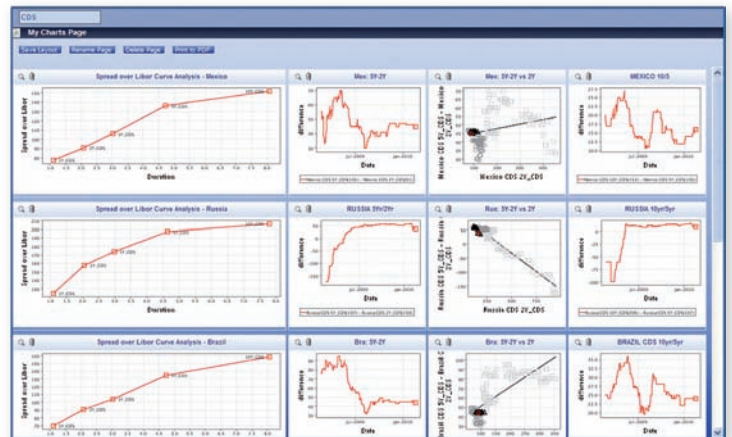
The information you want is never more than a few clicks away.

Getting Started

How do I access Insight?

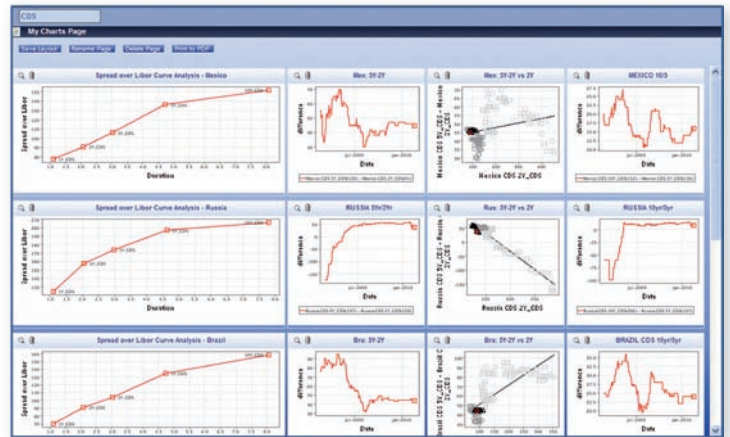
Type <http://autobahn.db.com/insight> into your web browser

- To find out more about Insight or to request access, contact your Deutsche Bank salesperson or relationship manager or call Jed Evans: +1 212 250 8605.



MyCharts

Any charts created in Insight can be saved to MyCharts to create a customized package of your most watched relationships. View MyCharts online or receive a pdf daily at market close via email.



Curve Analyzer

View any market data graphically as a curve. Choose any issuer's curves: Bonds, Foreign Exchange, Swaps or CDS. Compare curves over different time periods, different issuers, within similar credit rating or industry sector.



Trade Monitor

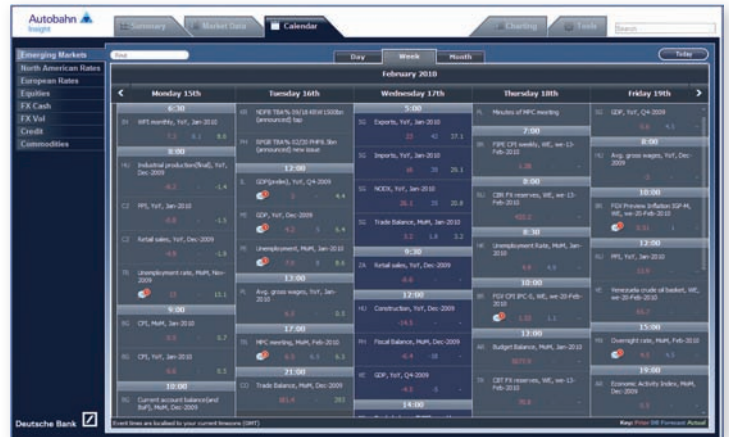
Monitor relative value relationships in real-time.

Hundreds of relationships can be easily added and set with target entry or exit levels. Create a chart pack of all your relationships sorted by those trades closest to reaching their target.



Economic Calendar

Monitor economic releases in the U.S. or any EM country. View releases for today or get a week or month-ahead view, with prior, consensus and DB forecasts. Click to view commentary by DB economists before and after releases. Commentary is also available from DB traders on the U.S. Treasury's TALF/TARP operations.



Monetary Policy Tool

Analyze the expected path of monetary policy implied by a country's market curve, or fit the market for monetary policy path already priced-in given the term premium in the curve. Create a model curve based on your view of how future policy rates will evolve. Compare the market and model curve to choose the tenors which best monetize your view.



Market Summary

Each market in Insight has a summary page which provides the most relevant information of the day. Links to the latest research include daily commentary, trade ideas, analytical reports and macro analysis. The Economic release calendar shows all the relevant releases for the day or week. Intra-day trader commentary is available for U.S. treasuries, swaps, agencies, swaptions and TBAs. A summary of market data for relevant benchmarks is also available.



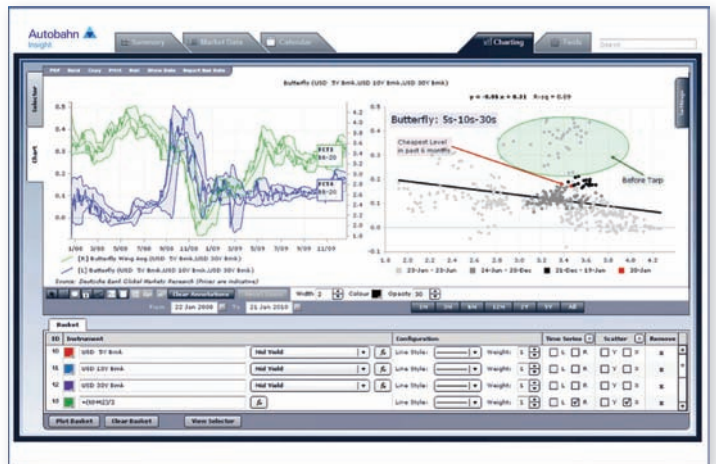
Market Monitor

Collapse whole segments of market data into a space-saving monitor where you select the benchmarks for each curve. With one click, the panels expand to display entire curves, plot time series data or launch tools.



Charting

Insight provides a whole suite of charting tools to accommodate a range of graphical requirements. Launch simple time series from the market data screens or use the chart wizard to construct more complex analysis. Compute regressions or apply mathematical functions to time series data. The chart wizard interprets arithmetic expressions enabling you to construct your own functions which may not be available in our library.



Market Data

Navigating market data is easy via intuitive instrument menus. They're organized by product type, geographic location, industry segment and issuer. Prices are colour coded and time-stamped to insure their relevance. Compare current levels to history or analyze relationships with the relative value chart tool. The tools menu is context sensitive to show only the analytical modules that are available for the selected assets.

The screenshot shows the 'Market Data' interface with a large table of instrument data. The table has columns for instrument name, cap, maturity, bid, ask, and change. The data is organized into a grid with various filters and sorting options. The interface is designed for easy navigation and data analysis.

Support desk numbers:

Insight Europe +44 (0) 207 547 3030
Insight US +1 (212) 250 8651
Insight Asia Pacific +65 6423 5660

Email autobahn.insight@db.com
Web <http://autobahn.db.com>

Marketing material

This document is intended for discussion purposes only and does not create any legally binding obligations on the part of Deutsche Bank AG and/or its affiliates ("DB"). Without limitation, this document does not constitute an offer, an invitation to offer or a recommendation to enter into any transaction. When making an investment decision, you should rely solely on the final documentation relating to the transaction and not the summary contained herein. DB is not acting as your financial adviser or in any other fiduciary capacity with respect to this proposed transaction. The transaction(s) or products(s) mentioned herein may not be appropriate for all investors and before entering into any transaction you should take steps to ensure that you fully understand the transaction and have made an independent assessment of the appropriateness of the transaction in the light of your own objectives and circumstances, including the possible risks and benefits of entering into such transaction. For general information regarding the nature and risks of the proposed transaction and types of financial instruments please go to www.globalmarkets.db.com/riskdisclosures. You should also consider seeking advice from your own advisers in making this assessment. If you decide to enter into a transaction with DB, you do so in reliance on your own judgement. The information contained in this document is based on material we believe to be reliable; however, we do not represent that it is accurate, current, complete, or error free. Assumptions, estimates and opinions contained in this document constitute our judgement as of the date of the document and are subject to change without notice. Any projections are based on a number of assumptions as to market conditions and there can be no guarantee that any projected results will be achieved. Past performance is not a guarantee of future results. This material was prepared by a Sales or Trading function within DB, and was not produced, reviewed or edited by the Research Department. Any opinions expressed herein may differ from the opinions expressed by other DB departments including the Research Department. Sales and Trading functions are subject to additional potential conflicts of interest which the Research Department does not face. DB may engage in transactions in a manner inconsistent with the views discussed herein. DB trades or may trade as principal in the instruments (or related derivatives), and may have proprietary positions in the instruments (or related derivatives) discussed herein. DB may make a market in the instruments (or related derivatives) discussed herein. Sales and Trading personnel are compensated in part based on the volume of transactions effected by them. The distribution of this document and availability of these products and services in certain jurisdictions may be restricted by law. You may not distribute this document, in whole or in part, without our express written permission. DB SPECIFICALLY DISCLAIMS ALL LIABILITY FOR ANY DIRECT, INDIRECT, CONSEQUENTIAL OR OTHER LOSSES OR DAMAGES INCLUDING LOSS OF PROFITS INCURRED BY YOU OR ANY THIRD PARTY THAT MAY ARISE FROM ANY RELIANCE ON THIS DOCUMENT OR FOR THE RELIABILITY, ACCURACY, COMPLETENESS OR TIMELINESS THEREOF. DB is authorised under German Banking Law (competent authority: BaFin – Federal Financial Supervising Authority) and regulated by the Financial Services Authority for the conduct of UK business. ©Copyright 2010 Deutsche Bank AG.