

North American Rates User guide



Autobahn Insight

Autobahn is Deutsche Bank's award-winning electronic distribution service.

Since 1996, Autobahn has been connecting clients to Deutsche Bank's innovative Capital Markets products and insights. Having started life primarily as an execution tool, Autobahn now provides electronic access to services harnessing our Sales, Trading and Research expertise and, ultimately creates an integrated experience with our voice services.

Autobahn is a simple, intuitive and consistent way for you to:

- Gain unparalleled access to Markets and Liquidity
- Electronically trade quickly and easily
- Intuitively access Deutsche Bank's powerful analytics and published content

Autobahn. Evolving Intelligent Trading.

<http://autobahn.db.com>

Summary

The North American Rates Summary page contains all significant market information in a simple one page interface, including:

Trader Commentary

- Commentary over the last 5 days on recent Rates market movements in US Treasuries, Swaps, Agencies, Volatility and TBAs (see Figure 1.4)
- Select a comment to view the information in more detail

Benchmarks

- Displaying the latest prices and yields with the respective change over the previous day
- Access a simple time series chart (in a separate window) by clicking on any value in blue

Calendar

- A view of the latest economic events with commentary from economists and trading

Publications

- Select a research publication to view the latest edition and also review content from DB sponsored events
- To access previous editions of the research publications, select the relevant Archive button

Analytical Reports

- A convenient place to access our most significant reports by market. Select a title to review the research (in a separate window)

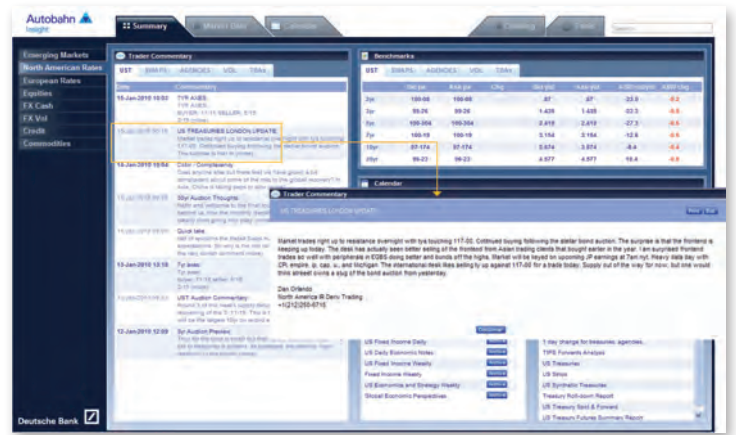


Fig. 1.4 Reviewing a Trader Commentary in more detail

Market Data

The Market Data dashboard displays the latest Treasury, Agency, Swaps, Volatility and Mortgage Backed Securities pricing.

Overview

Review a snapshot of the North American Rates space from the Overview page. To access it:

- Select the North American Rates Market Data tab
- Choose Overview from the Product drop down menu (see Figure 1.5)
- Select any value in blue (prices/yields/vol/etc) to plot a time series chart
- See the Charting section for more details on creating complex charts

The Overview page has an intuitive layout so that you can easily monitor the key performance indicators by market.



Fig. 1.5 The North American Rates Market Data Overview page

Market Data Continued

Market Data – Analytical Tools

For all other North American Rates Market Data Products, further analytical tools are accessible from the right-click menu (see Figure 1.6).

- Select a Product from the drop down menu
Where applicable, also select the Issuer, Maturity or Curve (for Swaps and Volatility)
- Alter the display mode using the drop down menus in the column headers
- Select up to 4 instruments in the Single Series column and then click the Chart button at the top of the column to create a time series chart
Alternatively, select a clickable cell (in blue) to display a time series chart of that contract
- Create both a scatter and time series spread chart by selecting from the following permutations:
One Long and one Short,
Two Longs and one Short, or,
One Long and two Shorts

Refer to the Tools section for more information.

- Rich/Cheap Analysis – the functionality can be found across the cash bond pricing (see Figure 1.7)
Select the Product/Geography and Issuer at the top of the Market Data dashboard e.g. Agency, Germany, All Bonds
Click the Rich/Cheap Analysis icon
The Rich/Cheap Report will be presented to you in the next screen (see Figure 1.8)

Adjust the parameters as required

As a default, the data is sorted by the rich to cheap t-score, but can easily be changed by clicking on the column heading

Press Save Report (see Figure 1.9)

Enter the Report Name or select an existing report to overwrite

Press Save

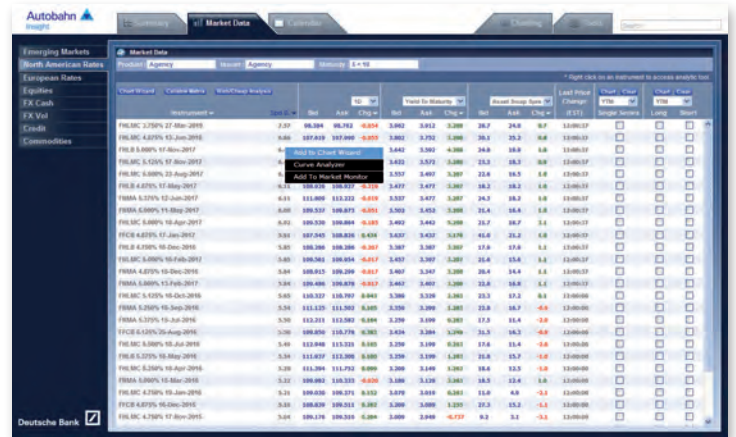


Fig. 1.6 Accessing the analytical tools from the right-click menus

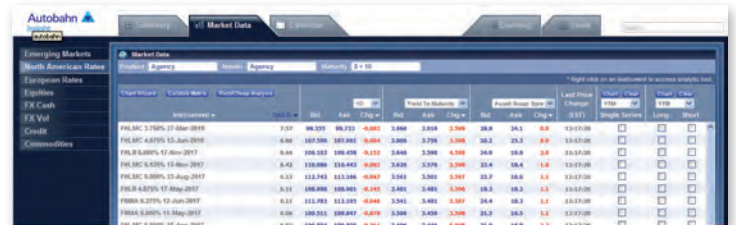


Fig. 1.7 Accessing the Rich/Cheap Analysis functionality

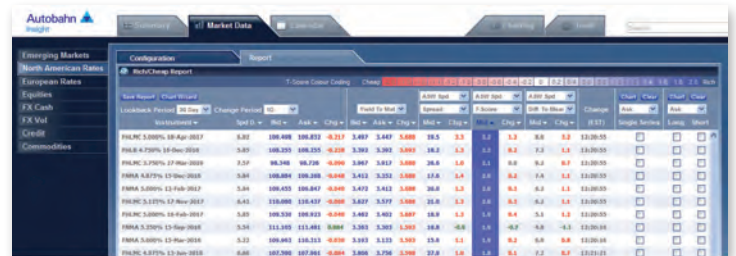


Fig. 1.8 A Rich/Cheap Report



Fig. 1.9 Saving a Rich/Cheap report

Charting

The Insight Charting functionality provides you with a whole suite of charting tools to accommodate a range of graphical requirements.

Creating a chart from the Selector menu

- Select the Charting tab
- In the Selector window, choose the asset class
- Each asset class drills down into security appropriate categories (tree structure drill down expands to the right)

The Selector illustrates your chosen categories at the top of the window (see Figure 1.12)

If you wish to go back to a previous category, simply click on the heading from the summary view at the top of the window

- From the Instrument panel, select the details
If you select more than one instrument, click the Add to Basket icon
Alternatively, select Plot Wizard at this stage to go straight to the chart
 - Beside each instrument in the Basket, you can select the data series to be plotted, alter the configuration (left or right axis) and determine whether to remove or show it in the resulting chart (see Figure 1.13)
 - Press Plot Basket
- Figure 1.14 shows the resulting chart which can be annotated, downloaded to Excel, copied and pasted to another application, printed, emailed or you can elect to view the data points (in a summary window)
- To revise the instruments selected in the chart, simply select the View Selector button or overwrite the information

Creating a chart without using the Selector

- In the Selector tab, enter the search details in the Series section
For example, if you wish to find the US 5 year Benchmark bond, type USD 5y bmk in the Series field and the system will find the associated instruments (see Figure 1.15)

For more information on charting, refer to the Insight Charting User Guide.

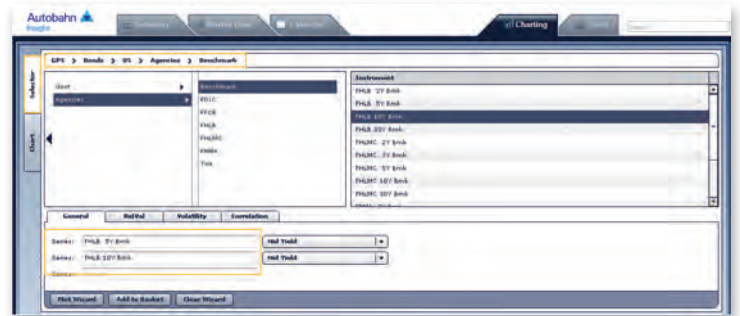


Fig. 1.12 Accessing the analytical tools from the right-click menus

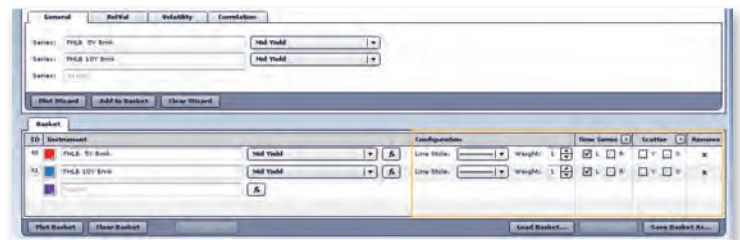


Fig. 1.13 Configuring the chart settings



Fig. 1.14 Viewing the resulting chart

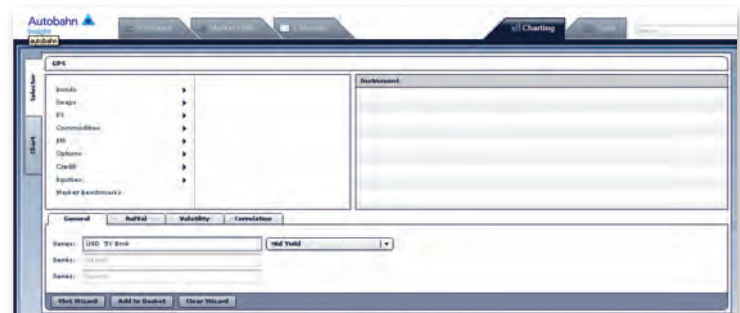


Fig. 1.15 Performing a search for instruments in the Series field

Tools

The Tools page contains the following functionality:

Callable Agency Pricer

- Evaluate US agency callable bonds using the same model that our trading desks utilise. Real-time data from both our swaps and volatility desks are used in the calculations

Add the bonds (by Cusip) either individually or you can enter multiple bonds

Bond Lists can be saved within the tool for future usage

Adjust the Price and Spread and the tool will then Calculate the data for you (see Figure 1.16)

Click on Bullet Comp to see comparable bullet securities, by duration, to see the yield pickup



Fig. 1.16 Callable Agency Pricer



Fig. 1.17 Selecting the Add to Market Monitor link from the right-click menu in the Market Data dashboard

Market Monitor

- Create a concise view of various markets by collapsing whole segments of market data into a space-saving monitor

Default pages have been created for the Latam, EMEA, Asia and Global Credit markets, however, you can in addition, create your own pages

The functionality also enables you to create pages with an unlimited number of instruments which are placed into 'panels'

- To store instruments to the Market Monitor;

Right click on an instrument from the Market Data dashboard (see Figure 1.17)

Choose the Add to Market Monitor option

Determine which page you wish to add the instrument to, alternatively select Create a New Page and provide the page name

Either elect to Create a New Panel or select the existing panel (see Figure 1.18)

Press Add to save the changes

To view the contents of your Market Monitor Pages, select Market Monitor from the Tools tab and choose your required page (see Figure 1.19)

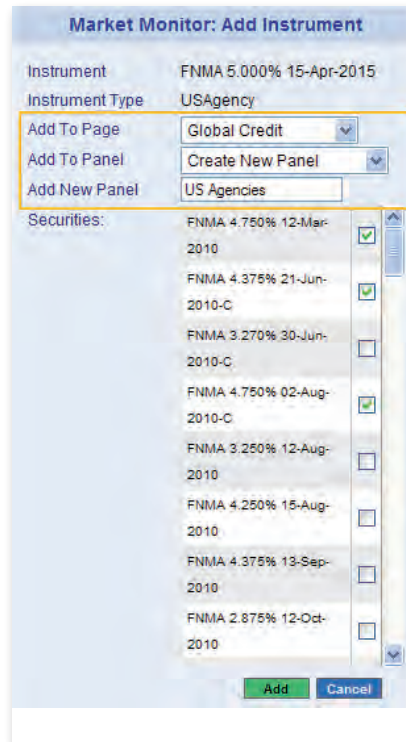


Fig. 1.18 Selecting the Page and Panel to add the instruments to

Market Monitor Pages can be edited or you can import from a list of default pages/panels. Panels can be dragged and dropped to different locations within a page. Simply select Save Layout to store your changes.



Fig. 1.19 The Market Monitor Page

Tools Continued

Curve Analyzer

- Facilitates the evaluation of term structures across the globe
 - Select an instrument from the Market Data pages using the right mouse click
 - The Curve Analyzer will default to the curve of that instrument
 - Add more curves to the chart and adjust the plot configuration, as required
 - Select the icon to store your settings, which can be loaded at a later date or you can select the Add to MyCharts function (see Figure 1.20)

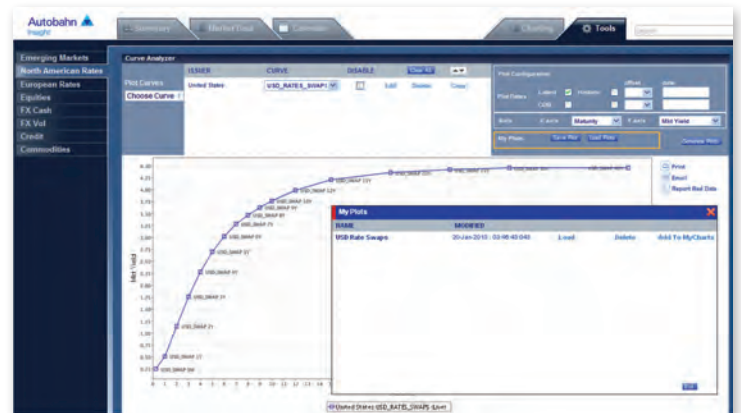


Fig. 1.20 Loading previously stored Curve Plots

Chart Wizard

- Add up to 10 instruments and generate time series charts using the Chart Wizard
 - Right-click on an instrument within the Market Data pages to store the details to the wizard, where you can chart them at a later time (during your current browser session)
 - Adjust the chart period, elect to plot a scatter chart and revise the attributes within the Chart Wizard
 - For your convenience, you can also use the Add Function option which allows you to build your own formulae
- To build a function, select the Add Function option within the Chart Wizard (this will launch a new row)
 - Select the Build icon (see Figure 1.21)
 - In the Function Builder window, choose the data series e.g. Spread, Moving Average etc
 - Select the instrument from the TimeSeries option and enter any additional details e.g. number of days for a Moving Average Period (see Figure 1.22)
 - Press OK. The function is then listed for you – this can be used as a shortcut, the next time you want to build a similar query (see Figure 1.23)



Fig. 1.21 Accessing the Build function

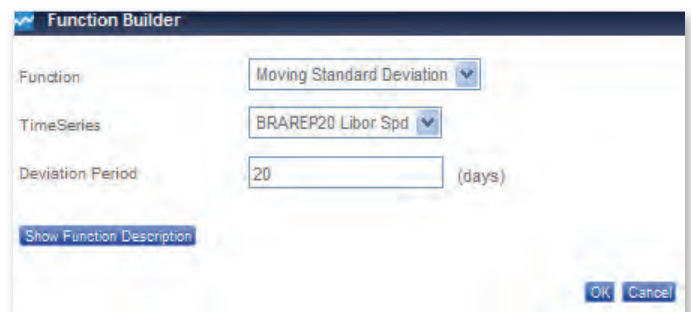


Fig. 1.22 Entering the Function Builder criteria

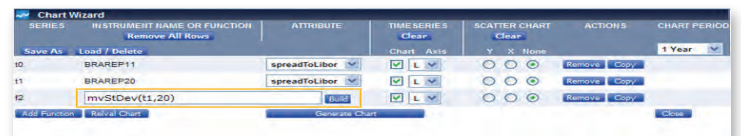


Fig. 1.23 Function details

Tools Continued

Trade Monitor

- An ideal tool for relative value investors who need to monitor hundreds of relationships. Define the Long and Short positions and establish entry and unwind targets. The trades closest to your targets can be sorted to the top of the monitor

Select Trade Monitor from the Tools menu

Click the Edit Instruments link

Choose the Long and Short details from the drop down menu in the Add a New Trade window (see Figure 1.24)

Select Add

In the Existing Trade window, you can then Revise the Entry and Unwind Targets and select the Target Type before saving the details. The Trade Monitor will now be updated (see Figure 1.25)

Select Open Graphs to review the charts of your chosen trades (see Figure 1.26)

MyCharts

- Charts can be saved and stored to existing product pages or your own pages. Print a PDF report of your charts from the MyCharts Page or, elect to have an email report sent to you each day (at market close)

Create a chart

Select the Add to MyCharts icon in the chart window

Choose the Add to Page option from the drop down menu or, select Create New Page

Enter a Chart name

Navigate to the MyCharts page

Use the drop down menu to load the required Chart Page

Charts can be dragged and dropped to different locations on the page (ensure that you select Save Layout to store the configuration)

Click the Print to PDF icon to create a report

- Alternatively, to receive the chart reports via email

Select E-Mail Settings from the menu (see Figure 1.27)

In the MyCharts Package Content window, select the packages to be included in your report (and also the order in which they appear)

In the MyCharts Package E-Mail section, select the Send Email option and choose your frequency settings

Finally, press Save Settings

The email chart reports will then be sent to you on the day selected at market close

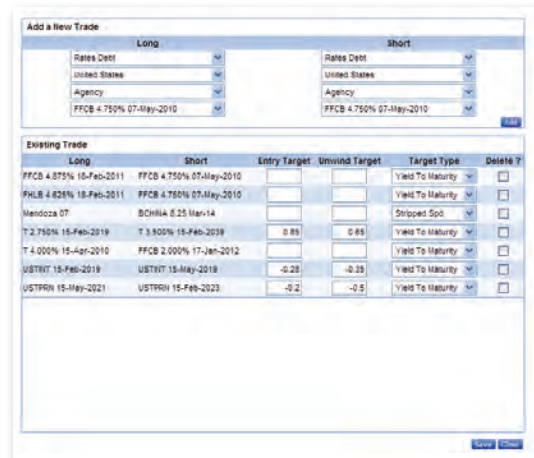


Fig. 1.24 Entering the Trade details



Fig. 1.25 The Trade Monitor

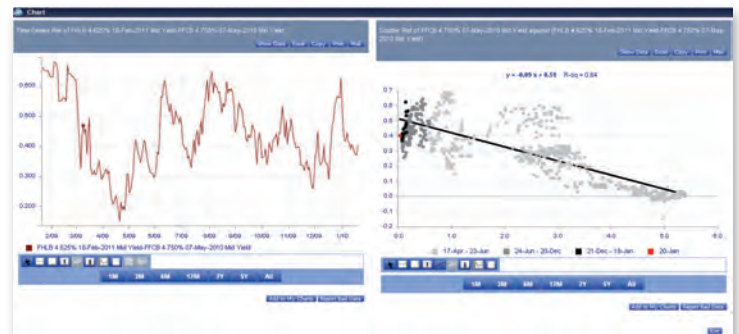


Fig. 1.26 Open Graphs



Fig. 1.27 E-Mail Settings

Support desk numbers:

Insight Europe +44 (0) 207 547 3030
Insight US +1 (212) 250 8651
Insight Asia Pacific +65 6423 5660

Email autobahn.insight@db.com
Web <http://autobahn.db.com>

Marketing material

This document is intended for discussion purposes only and does not create any legally binding obligations on the part of Deutsche Bank AG and/or its affiliates ("DB"). Without limitation, this document does not constitute an offer, an invitation to offer or a recommendation to enter into any transaction. When making an investment decision, you should rely solely on the final documentation relating to the transaction and not the summary contained herein. DB is not acting as your financial adviser or in any other fiduciary capacity with respect to this proposed transaction. The transaction(s) or products(s) mentioned herein may not be appropriate for all investors and before entering into any transaction you should take steps to ensure that you fully understand the transaction and have made an independent assessment of the appropriateness of the transaction in the light of your own objectives and circumstances, including the possible risks and benefits of entering into such transaction. For general information regarding the nature and risks of the proposed transaction and types of financial instruments please go to www.globalmarkets.db.com/riskdisclosures. You should also consider seeking advice from your own advisers in making this assessment. If you decide to enter into a transaction with DB, you do so in reliance on your own judgement. The information contained in this document is based on material we believe to be reliable; however, we do not represent that it is accurate, current, complete, or error free. Assumptions, estimates and opinions contained in this document constitute our judgement as of the date of the document and are subject to change without notice. Any projections are based on a number of assumptions as to market conditions and there can be no guarantee that any projected results will be achieved. Past performance is not a guarantee of future results. This material was prepared by a Sales or Trading function within DB, and was not produced, reviewed or edited by the Research Department. Any opinions expressed herein may differ from the opinions expressed by other DB departments including the Research Department. Sales and Trading functions are subject to additional potential conflicts of interest which the Research Department does not face. DB may engage in transactions in a manner inconsistent with the views discussed herein. DB trades or may trade as principal in the instruments (or related derivatives), and may have proprietary positions in the instruments (or related derivatives) discussed herein. DB may make a market in the instruments (or related derivatives) discussed herein. Sales and Trading personnel are compensated in part based on the volume of transactions effected by them. The distribution of this document and availability of these products and services in certain jurisdictions may be restricted by law. You may not distribute this document, in whole or in part, without our express written permission. DB SPECIFICALLY DISCLAIMS ALL LIABILITY FOR ANY DIRECT, INDIRECT, CONSEQUENTIAL OR OTHER LOSSES OR DAMAGES INCLUDING LOSS OF PROFITS INCURRED BY YOU OR ANY THIRD PARTY THAT MAY ARISE FROM ANY RELIANCE ON THIS DOCUMENT OR FOR THE RELIABILITY, ACCURACY, COMPLETENESS OR TIMELINESS THEREOF. DB is authorised under German Banking Law (competent authority: BaFin – Federal Financial Supervising Authority) and regulated by the Financial Services Authority for the conduct of UK business. ©Copyright 2010 Deutsche Bank AG.